



Batch ID: 307023-B

Sample Description: Full Spectrum Infused Blueberry Pectin Gummies 35 mg / Gummy

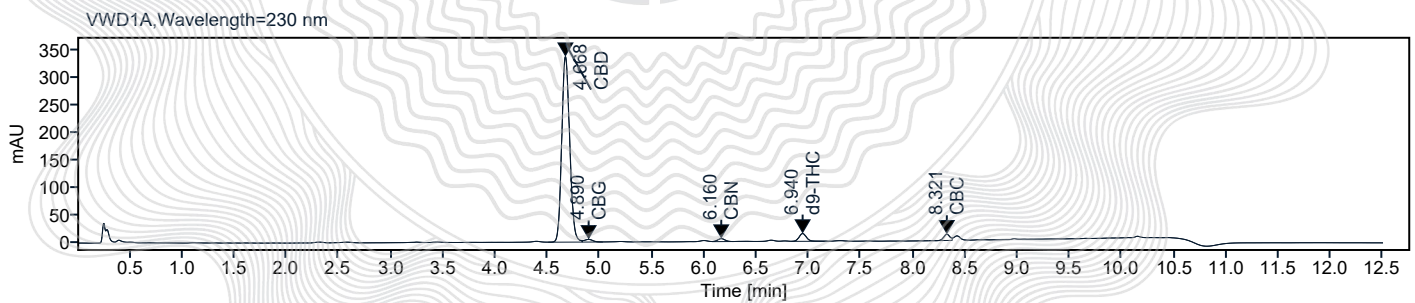
Analysis Data: 2023-07-26 16-45-37-04-00.dx

Name	Concentration [mg/g]	% Amount
d8-THC	0.00	
THC-A	0.00	
THC-V	0.00	
CBG-A	0.00	
CBD-V	0.00	
CBD-A	0.00	
CBD	7.27	0.727
CBG	0.10	0.010
CBN	0.04	0.004
d9-THC	0.29	0.029
CBC	0.03	0.003

Total CBD: 31.46 mg

Sum of Cannabinoids: 33.46 mg

Comments: Gummy Avg. Wt. 4.328 g



Cannabinoids with on-column values below LOQ will not be calculated into the "Total Cannabinoids" value. Reporting Limits will vary based on sample extraction weight used for the analysis. Bloomios LLC Test lab utilizes, based upon traceable Reference Standards and Certified Reference material to calibrate analytical instruments along with proven analytical methods. The results of this report are based solely on the sample submitted and cannot be reproduced. Certificate of analysis shall not be reproduced except in full with approval of Bloomios Lab LLC.



Lab Director



Batch ID: 307023-M

Sample Description: Full Spectrum Infused Mango Pectin Gummies 35 mg / Gummy

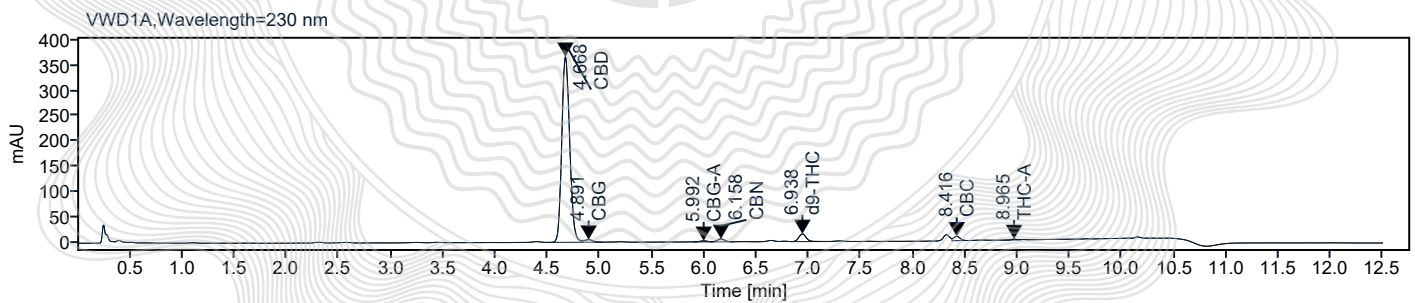
Analysis Data: 2023-07-26 17-12-18-04-00.dx

Name	Concentration [mg/g]	% Amount
CBD-V	0.00	
d8-THC	0.00	
THC-V	0.00	
CBD-A	0.00	
CBD	7.74	0.774
CBG	0.10	0.010
CBG-A	0.03	0.003
CBN	0.04	0.004
d9-THC	0.31	0.031
CBC	0.02	0.002
THC-A	0.01	0.001

Total CBD: 32.90 mg

Sum of Cannabinoids: 35.07 mg

Comments: Gummy Avg. Wt. 4.251 g



Cannabinoids with on-column values below LOQ will not be calculated into the "Total Cannabinoids" value. Reporting Limits will vary based on sample extraction weight used for the analysis. Bloomios LLC Test lab utilizes, based upon traceable Reference Standards and Certified Reference material to calibrate analytical instruments along with proven analytical methods. The results of this report are based solely on the sample submitted and cannot be reproduced. Certificate of analysis shall not be reproduced except in full with approval of Bloomios Lab LLC.



Lab Director



Batch ID: 307023-W

Sample Description: Full Spectrum Infused Watermelon Pectin Gummies 35 mg / Gummy

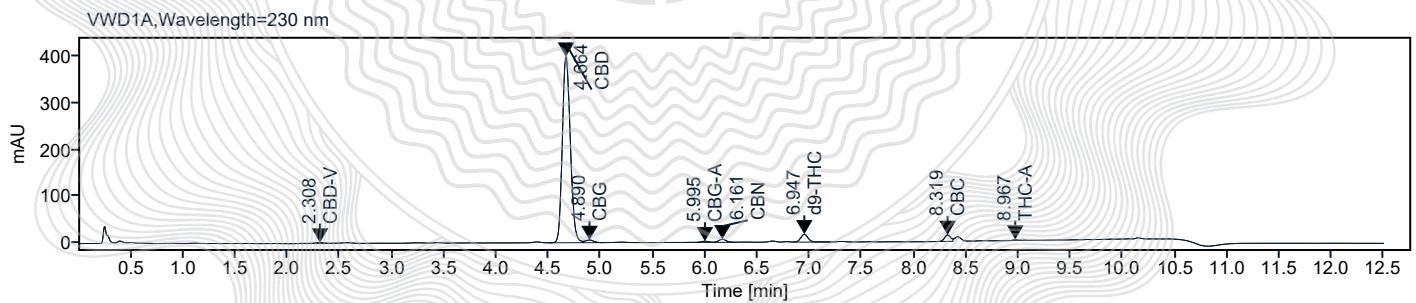
Analysis Data: 2023-07-26 16-58-56-04-00.dx

Name	Concentration [mg/g]	% Amount
CBD-A	0.00	
d8-THC	0.00	
THC-V	0.00	
CBD-V	0.05	0.005
CBD	8.63	0.863
CBG	0.12	0.012
CBG-A	0.03	0.003
CBN	0.05	0.005
d9-THC	0.35	0.035
CBC	0.05	0.005
THC-A	0.01	0.001

Total CBD: 36.78 mg

Sum of Cannabinoids: 39.59 mg

Comments: Gummy Avg. Wt. 4.262 g



Cannabinoids with on-column values below LOQ will not be calculated into the "Total Cannabinoids" value. Reporting Limits will vary based on sample extraction weight used for the analysis. Bloomios LLC Test lab utilizes, based upon traceable Reference Standards and Certified Reference material to calibrate analytical instruments along with proven analytical methods. The results of this report are based solely on the sample submitted and cannot be reproduced. Certificate of analysis shall not be reproduced except in full with approval of Bloomios Lab LLC.



Lab Director