



Pure Shaka LLC

Sample 619-040124-060

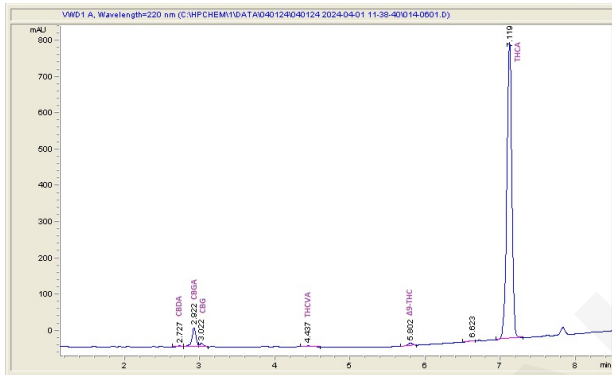
Hemp A - Lambo

Sample Submitted: 04-01-2024; Report Date: 04-02-2024

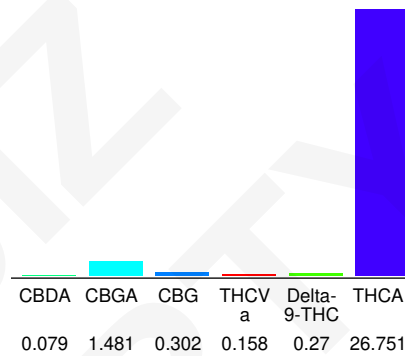
Hemp A - Lambo

Plant Material: Hemp Flower

Chromatogram



Cannabinoid Profile



Cannabinoid Profile by HPLC

0.27%
Delta-9-THC

0.00%
CBD

29.04%
Total Cannabinoids

Cannabinoid	% wt	mg/g
CBDA	0.079	0.79
CBGA	1.481	14.81
CBG	0.302	3.02
THCVa	0.158	1.58
Delta-9-THC	0.27	2.7
THCA	26.75	267.51
Total Cannabinoids	29.04	290.4
Calculated Total THC	23.73	237.31
Calculated CBD Yield	0.07	0.69

Calculated Total THC = Delta-9-THC + 0.877 * THCA

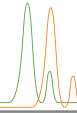
Calculated Maximum CBD Yield = CBD + 0.877 * CBDA

Marin Analytics, LLC

250 Bel Marin Keys Blvd, Suite D4
Novato, CA 94949

833-321-TEST / info@marinanalytics.com

Mike Clemmons
Lab Manager



Pure Shaka LLC

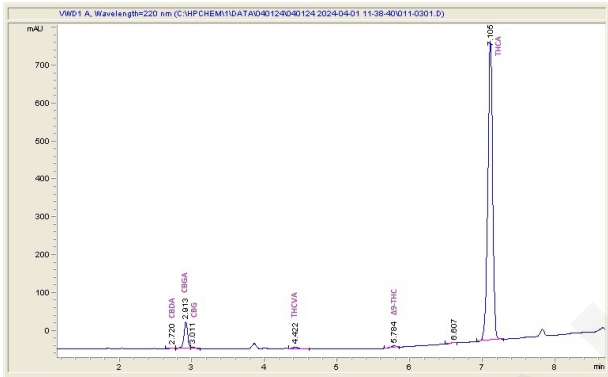
Sample 619-040124-057

Hemp A - White Truffle x Cereal Milk
Sample Submitted: 04-01-2024; Report Date: 04-02-2024

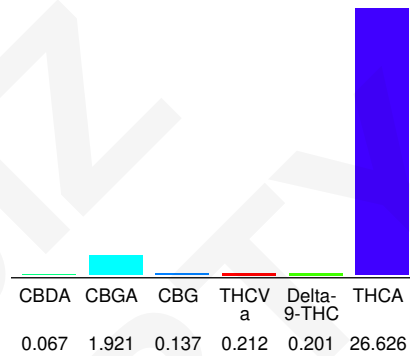
Hemp A - White Truffle x Cereal Milk

Plant Material: Hemp Flower

Chromatogram



Cannabinoid Profile



Cannabinoid Profile by HPLC

0.20%
Delta-9-THC

0.00%
CBD

29.16%
Total Cannabinoids

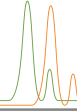
Cannabinoid	% wt	mg/g
CBDA	0.067	0.67
CBGA	1.921	19.21
CBG	0.137	1.37
THCVa	0.212	2.12
Delta-9-THC	0.201	2.01
THCA	26.63	266.26
Total Cannabinoids	29.16	291.6
Calculated Total THC	23.55	235.52
Calculated CBD Yield	0.06	0.59

Calculated Total THC = Delta-9-THC + 0.877 * THCA
Calculated Maximum CBD Yield = CBD + 0.877 * CBDA

Marin Analytics, LLC
250 Bel Marin Keys Blvd, Suite D4
Novato, CA 94949
833-321-TEST / info@marinanalytics.com

Mike Clemmons
Lab Manager

This sample has been tested by Marin Analytics, LLC using valid testing methodologies and a quality system. Values reported relate only to the sample tested. Marin Analytics, LLC makes no claims as to the efficacy, safety, or other risks associated with any detected or non-detected levels of any compounds reported herein. This Certificate shall not be reproduced except in full without the written approval of Marin Analytics, LLC. Copyright 2023 Marin Analytics, LLC All Rights Reserved.



Pure Shaka LLC

Sample 619-040124-061

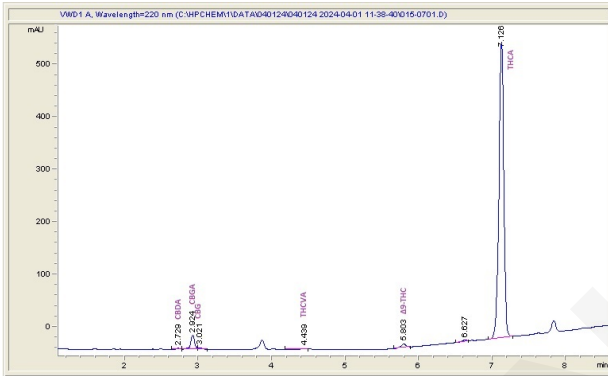
Hemp A - Caribbean Breeze

Sample Submitted: 04-01-2024; Report Date: 04-02-2024

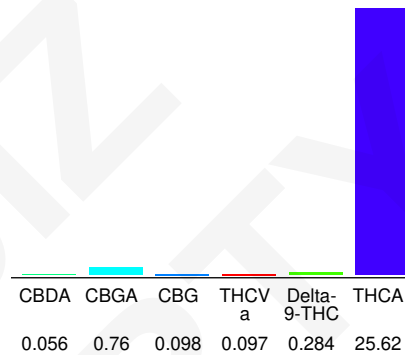
Hemp A - Caribbean Breeze

Plant Material: Hemp Flower

Chromatogram



Cannabinoid Profile



Cannabinoid Profile by HPLC

0.28%
Delta-9-THC

0.00%
CBD

26.92%
Total Cannabinoids

Cannabinoid	% wt	mg/g
CBDA	0.056	0.56
CBGA	0.76	7.6
CBG	0.098	0.98
THCVa	0.097	0.97
Delta-9-THC	0.284	2.84
THCA	25.62	256.2
Total Cannabinoids	26.92	269.2
Calculated Total THC	22.75	227.53
Calculated CBD Yield	0.05	0.49

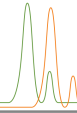
Calculated Total THC = Delta-9-THC + 0.877 * THCA
Calculated Maximum CBD Yield = CBD + 0.877 * CBDA

Marin Analytics, LLC
250 Bel Marin Keys Blvd, Suite D4
Novato, CA 94949

833-321-TEST / info@marinanalytics.com

Mike Clemmons
Lab Manager

This sample has been tested by Marin Analytics, LLC using valid testing methodologies and a quality system. Values reported relate only to the sample tested. Marin Analytics, LLC makes no claims as to the efficacy, safety, or other risks associated with any detected or non-detected levels of any compounds associated herein. This Certificate shall not be reproduced except in full without the written approval of Marin Analytics, LLC. Copyright 2023 Marin Analytics, LLC All Rights Reserved.



Pure Shaka LLC

Sample 619-040124-062

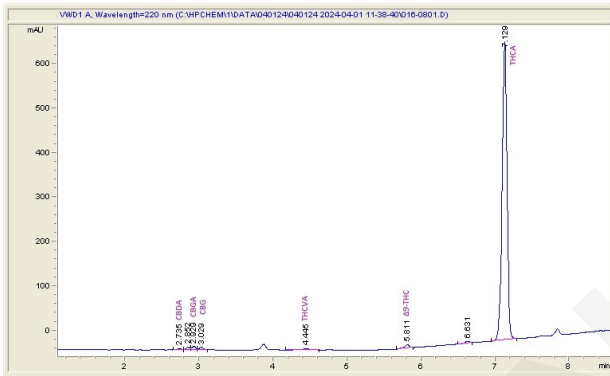
Hemp A - Menage

Sample Submitted: 04-01-2024; Report Date: 04-02-2024

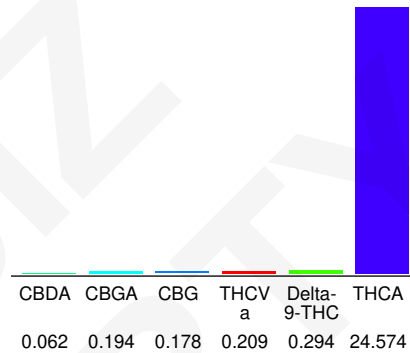
Hemp A - Menage

Plant Material: Hemp Flower

Chromatogram



Cannabinoid Profile



Cannabinoid Profile by HPLC

0.29%
Delta-9-THC

0.00%
CBD

25.51%
Total Cannabinoids

Cannabinoid	% wt	mg/g
CBDA	0.062	0.62
CBGA	0.194	1.94
CBG	0.178	1.78
THCVa	0.209	2.09
Delta-9-THC	0.294	2.94
THCA	24.57	245.74
Total Cannabinoids	25.51	255.1
Calculated Total THC	21.85	218.45
Calculated CBD Yield	0.05	0.54

Calculated Total THC = Delta-9-THC + 0.877 * THCA
Calculated Maximum CBD Yield = CBD + 0.877 * CBDA

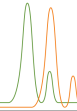
Marin Analytics, LLC

250 Bel Marin Keys Blvd, Suite D4
Novato, CA 94949

833-321-TEST / info@marinanalytics.com

Mike Clemmons
Lab Manager

This sample has been tested by Marin Analytics, LLC using valid testing methodologies and a quality system. Values reported relate only to the sample tested. Marin Analytics, LLC makes no claims as to the efficacy, safety, or other risks associated with any detected or non-detected levels of any compounds reported herein. This Certificate shall not be reproduced except in full without the written approval of Marin Analytics, LLC. Copyright 2023 Marin Analytics, LLC All Rights Reserved.



Pure Shaka LLC

Sample 619-040124-063

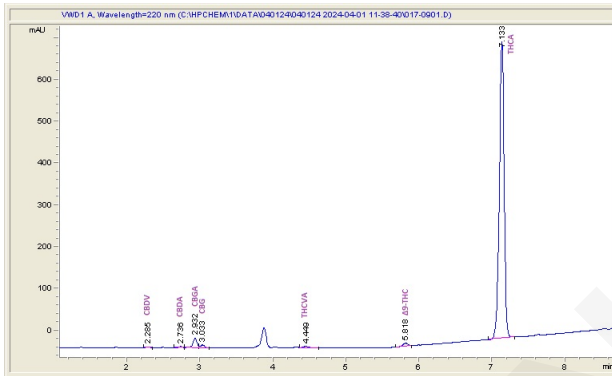
Hemp A - Pineapple Breeze

Sample Submitted: 04-01-2024; Report Date: 04-02-2024

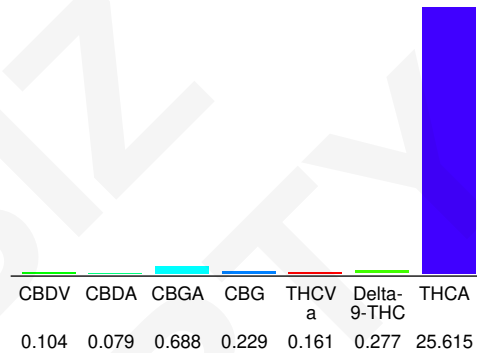
Hemp A - Pineapple Breeze

Plant Material: Hemp Flower

Chromatogram



Cannabinoid Profile



Cannabinoid Profile by HPLC

0.28%
Delta-9-THC

0.00%
CBD

27.15%
Total Cannabinoids

Cannabinoid	% wt	mg/g
CBDV	0.104	1.04
CBDA	0.079	0.79
CBGA	0.688	6.88
CBG	0.229	2.29
THCVa	0.161	1.61
Delta-9-THC	0.277	2.77
THCA	25.62	256.15
Total Cannabinoids	27.15	271.5
Calculated Total THC	22.74	227.41
Calculated CBD Yield	0.07	0.69
Calculated Total THC = Delta-9-THC + 0.877 * THCA		
Calculated Maximum CBD Yield = CBD + 0.877 * CBDA		

Marin Analytics, LLC
250 Bel Marin Keys Blvd, Suite D4
Novato, CA 94949

833-321-TEST / info@marinanalytics.com

Mike Clemmons
Lab Manager

This sample has been tested by Marin Analytics, LLC using valid testing methodologies and a quality system. Values reported relate only to the sample tested. Marin Analytics, LLC makes no claims as to the efficacy, safety, or other risks associated with any detected or non-detected levels of any compounds reported herein. This Certificate shall not be reproduced except in full without the written approval of Marin Analytics, LLC. Copyright 2023 Marin Analytics, LLC All Rights Reserved.