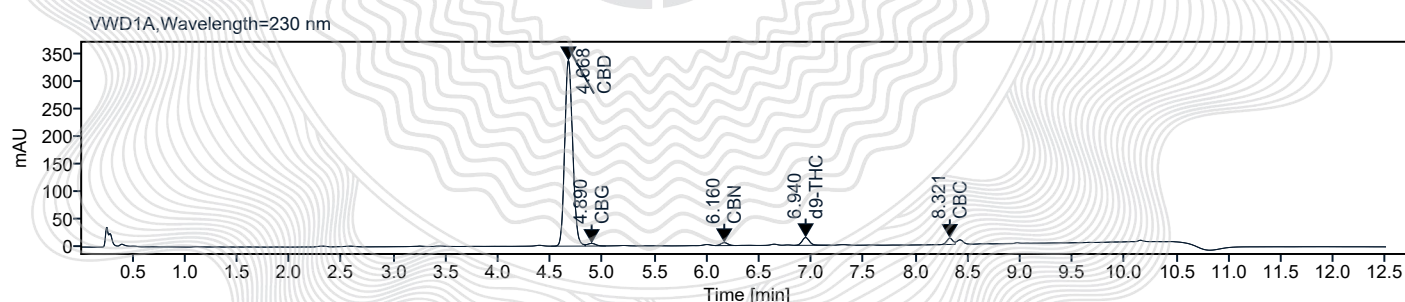


Batch ID: 307023-B

Sample Description: Full Spectrum Infused Blueberry Pectin Gummies 35 mg / Gummy

Analysis Data: 2023-07-26 16-45-37-04-00.dx

Name	Concentration [mg/g]	% Amount
d8-THC	0.00	
THC-A	0.00	
THC-V	0.00	
CBG-A	0.00	
CBD-V	0.00	
CBD-A	0.00	
CBD	7.27	0.727
CBG	0.10	0.010
CBN	0.04	0.004
d9-THC	0.29	0.029
CBC	0.03	0.003

Total CBD: 31.46 mg
Sum of Cannabinoids: 33.46 mg
Comments: Gummy Avg. Wt. 4.328 g


Cannabinoids with on-column values below LOQ will not be calculated into the "Total Cannabinoids" value. Reporting Limits will vary based on sample extraction weight used for the analysis. Bloomios LLC Test lab utilizes, based upon traceable Reference Standards and Certified Reference material to calibrate analytical instruments along with proven analytical methods. The results of this report are based solely on the sample submitted and cannot be reproduced. Certificate of analysis shall not be reproduced except in full with approval of Bloomios Lab LLC.



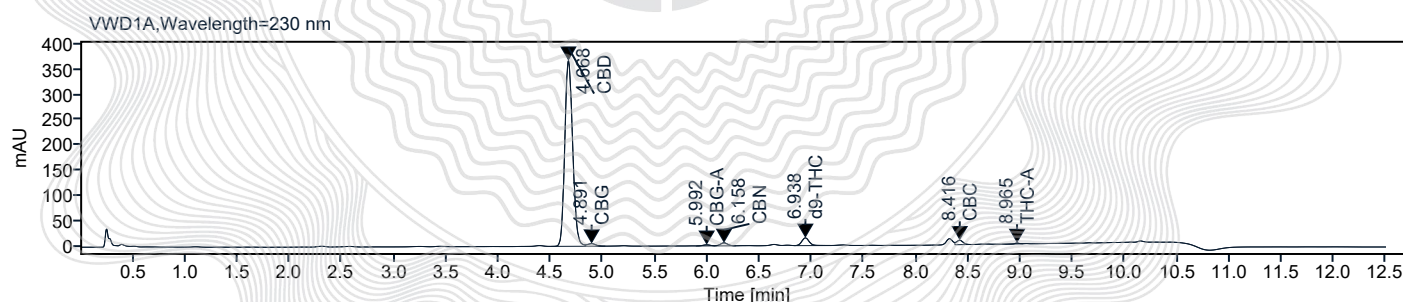
 Lab Director

Batch ID: 307023-M

Sample Description: Full Spectrum Infused Mango Pectin Gummies 35 mg / Gummy

Analysis Data: 2023-07-26 17-12-18-04-00.dx

Name	Concentration [mg/g]	% Amount
CBD-V	0.00	
d8-THC	0.00	
THC-V	0.00	
CBD-A	0.00	
CBD	7.74	0.774
CBG	0.10	0.010
CBG-A	0.03	0.003
CBN	0.04	0.004
d9-THC	0.31	0.031
CBC	0.02	0.002
THC-A	0.01	0.001

Total CBD: 32.90 mg
Sum of Cannabinoids: 35.07 mg
Comments: Gummy Avg. Wt. 4.251 g


Cannabinoids with on-column values below LOQ will not be calculated into the "Total Cannabinoids" value. Reporting Limits will vary based on sample extraction weight used for the analysis. Bloomios LLC Test lab utilizes, based upon traceable Reference Standards and Certified Reference material to calibrate analytical instruments along with proven analytical methods. The results of this report are based solely on the sample submitted and cannot be reproduced. Certificate of analysis shall not be reproduced except in full with approval of Bloomios Lab LLC.



 Lab Director

Batch ID: 307024-W

Sample Description: D8 Infused Watermelon Pectin Gummies 25mg / Gummy

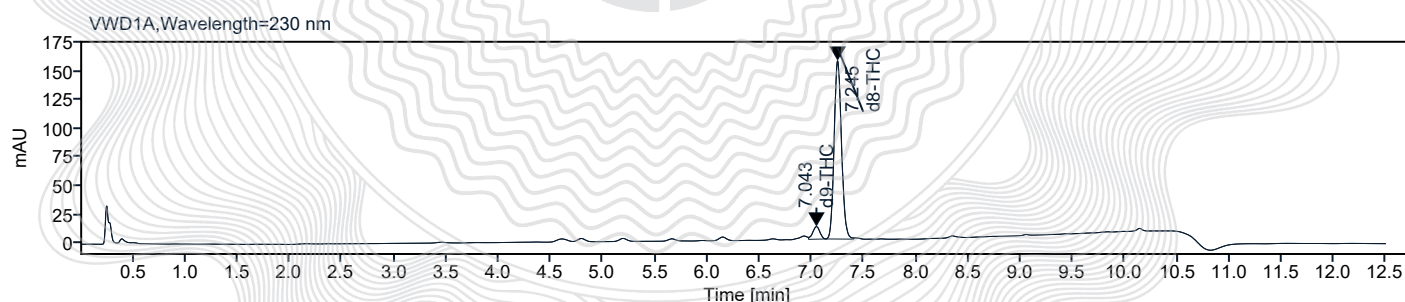
Analysis Data: 2023-07-24 18-10-49-04-00.dx

Name	Concentration [mg/g]	% Amount
CBN	0.00	
THC-A	0.00	
CBC	0.00	
CBD	0.00	
CBD-A	0.00	
CBD-V	0.00	
CBG	0.00	
CBG-A	0.00	
THC-V	0.00	
d9-THC	0.32	0.032
d8-THC	6.33	0.633

Total d8-THC: 28.31 mg

Sum of Cannabinoids: 29.75 mg

Comments: Gummy Avg. Wt. 4.473 g



Cannabinoids with on-column values below LOQ will not be calculated into the "Total Cannabinoids" value. Reporting Limits will vary based on sample extraction weight used for the analysis. Bloomios LLC Test lab utilizes, based upon traceable Reference Standards and Certified Reference material to calibrate analytical instruments along with proven analytical methods. The results of this report are based solely on the sample submitted and cannot be reproduced. Certificate of analysis shall not be reproduced except in full with approval of Bloomios Lab LLC.




 Lab Director